

Children Looked After – The Role of the Corporate Parenting Board

Presentation by

Bradley Wilson, LINX (Lancashire's Children in Care
Council)

County Councillor Sue Prynne, Chair of the Corporate
Parenting Board

&

Tony Morrissey, Deputy Director for Children's Services

13 January 2017

Aims of Presentation

To outline the:

- Purpose of Corporate Parenting Board
- Priorities
- Life in Care
- Achievements
- Facts
- Continuous Improvement

How the Board Works

- Bi monthly evening meetings
- Agenda linked to agreed priorities
- Active involvement of young people
- Young people set the agenda and chair one meeting per year
- Elected members meet prior to the meeting
- Young people meet prior to the meeting
- Elected member champions
- Working group support
- Presentation, reports, interactive activity and celebration
- Reports to the Cabinet Member for Children, Young People and Schools

Response to Ofsted Report

- The children in care council (CICC) remains well established and integrated into the CPB
- Elected Members on the CPB undertake visits to Children's Homes (in-house and agency) to measure the quality of care
- The Young Inspectors report their findings to the CPB

Response to Ofsted Report

- The CPB scrutinise and challenge the progress of CLA in respect to educational attainment
- The CPB receives the IRO Annual report and challenges any areas for improvement
- The CPB Elected Members attend adoption activity days to monitor and support permanence planning

Response to Ofsted Report

- The CPB receives regular updates on Care Leavers and challenges practice
- The CPB champions care leavers exemption from Council Tax
- The CPB works with Third Sector organisations e.g. Barnardos/TCS to look at innovative ways of working

Response to Ofsted Report

- CPB Elected Members are looking at the quality of Supported Accommodation for Care Leavers
- CPB Elected Members are looking at the quality of Mental Health Provision for Children Looked After and Care Leavers

Children Looked After need to be listened to

Life for us in care in Lancashire

Being in care: What is different for us?

It's important to remember that...

“everyone's in care for different reasons” and that “everyone is an individual”.

All children and young people have different needs but for those that are in care there are some things that are different. Our experiences are different and we have different needs.

Some things about Children Looked After (CLA) that maybe people do not think about...

Your home or placement:

- Sometimes we have lots of placements and this can be difficult
- Some people might feel like where they live is not their home
- We have to learn to live with other young people
- We can end up living in a different area to where we grew up
- Sometimes we lose contact with friends and this can be upsetting

The People:

- There are lots of people involved in making decisions for you
- Sometimes we are the last to find out important information
- It is not your family – someone is paid to look after you
- You do not always have strong relationships with the people in your life

Rules:

- Getting consent to go on trips – this can sometimes take a lot of time
- Getting consent for photographs – we can say we are happy to have our photo taken but have to wait for our social worker to say it's ok

Leaving care:

- Moving into independence – feeling too young and not having enough information or support
- Provision when leaving care is reduced

Some other activities...

The Children in Care Council:

- is part of the Lancashire Youth Council structure
- are involved in the Recruitment and Selection of staff at numerous agencies including Lancashire County Council, Barnardo's and The Office of the Children's Commissioner
- lead on 50% of all Corporate Parenting Board Meetings and deliver a full young person led meeting each year
- deliver training and presentations to the Children's Trust Workforce and other agencies such as the Council for Disabled Children
- are represented at several National Forums including Children's Rights Alliance for England, CAFCASS and The Office of the Children's Commissioner
- part of the North West Regional Children in Care Council group and Lancashire have hosted a meeting
- are young inspectors and inspect residential homes and fostering agencies
- sit on the Lancashire Post-Ofsted improvement board
- participate in Takeover month
- wider activity with regard to Care Leavers around apprenticeships and attendance at national and regional forums

Some things we like...

We like being involved in decisions made about us.

Having the Children in Care Council is important as it gives the opportunity for children and young people to have their voices heard.

A young person said, "Being part of LINX has given me confidence and made me more resilient."

Some things we want to change...

- More explanation about decisions that are made and any rules that are put in place
- More support when leaving care including more information and workers that are available when we need them
- The Corporate Parenting Board is good and we like running half of it but sometimes it's hard for us to follow the information professionals present, we would like this to be more interactive
- We would like to be given information that is easy for us to read and understand, we like information that is easy to find online
- We would like to have more contact with our siblings or family, this is important to us
- We want to be made aware of what is going on whilst we are in care and we want to be part of any decision made about us

Achievements

- Proud Award – Outstanding Service to the Community for LINX
- Diana award for the Young Inspectors Group
- British Youth Council Awards including:
 - ‘Inspiring Youth Led’ award for the Young Inspectors
 - ‘Inspiring Youth Led’ award for the Children in Care Council
- Young person been invited to the Queen’s Garden Party in Summer 2017

Achievements

- We put forward a proposal to exempt all care leavers from paying council tax until they are 25 years old. We wrote a letter to all the district councils and this was supported by Corporate Parenting Board
- Chorley Council have recently accepted this proposal! We are very happy about this and are hopeful that other district councils will follow

So What Have We Achieved?

Words to Actions to Outcomes

Action	Difference Made
Celebrating Achievement	Supported annual PROUD celebration event.
Reassurance from Activity Days	7 children have attended activity days in 2016 – 3 matches with adopters have been confirmed to date and expressions of interest are also currently being followed up. It was noted that how the CPB had monitored and evaluated the Activity Days at various stages of the process, was a good example of the Board exercising its scrutiny function.
Regulation 22 Visits carried out by Elected Members	Visits continue to be carried out as well as Young Inspectors regularly inspecting establishments too. A visit was also carried out to an Out of County placement.
Housing – Policies and Council Tax Exemption	The Board has worked alongside the CiCC on Council Tax exemption for up to 25 year olds. This work continues, with one Council already agreeing from April 2017 to adopt this. District Councils were asked to look at their Housing Policies and ensure that there were reference specifically to care leavers in them.
Performance Report scrutinised by LINX before every Board meeting	In 2015, 86.5% of Children Looked After had up to date health assessments and 73.9% had up to date dental assessment, which were higher and lower than in the previous year respectively. At the end of March 2016, these respective proportions were 91.9% and 71.2%. Performance as at 31 st October 2016 was 88% and 73.7% respectively.

So What Have We Achieved? Cont'd

Words to Actions to Outcomes

Action	Difference Made
Raise awareness of the Pupil Premium	The development of the Education Provision Map, which has to be provided by schools for each looked after child, had greatly increased the transparency around the use of pupil premium grant and the impact it has on pupil progress and attainment. We no longer have Education Provision Maps – from April 2016, Personal Education Plans (PEP) included the missing information. Currently 86% of CLA have a PEP.

Life in Care – Facts

Question	Answer
How many children and young people does Lancashire County Council have in its care?	Number has risen over the last year and was 1,691 at 31 March 2016. Rate per 10,000 at 69.1 is above that of England (60.0) and statistical neighbours (62.0) and well below the regional rate (82.0). At 31.10.2016 – 1,791 & 72.9.
What is the peak age for children/young people coming into our care?	As of 31 st March 2016, Children and young people aged under 10 years accounts for 46.7% of those in our care but the peak ages for entering care are 0-1 years old. As of 31 st October 2016, this proportion was 45.3%.
Where might children in our care live?	With foster carers, in a children’s home, and with relatives/family friends.
What proportion of these live with foster parents?	As of 31 st March 2016, 63.4% were in foster care. As of 31 st October 2016, this proportion was 61.2%.
Why do children and young people come into care?	Mainly due to abuse, neglect and family stress/problems.
How many CLA are also known to the Youth Justice system?	As of 31 st March 2016, 20.8% of children looked after had cautions/convictions. As of 30 th September 2016, this proportion was 13.6%.
At what age do Care Orders end?	18 years old – however we know in reality with our own families that ideally young people should stay with foster carers until 21 years old.

Life in Care – Facts Cont'd...

TOTAL NUMBERS OF CHILDREN LOOKED AFTER					
District Team	Mar-14	Mar-15	Mar-16	Sep-16	% of Total CLA
Lancaster	110	131	146	159	8.9
Fylde/Wyre	73	104	101	121	6.8
Preston	178	183	224	246	13.7
Chorley/ South Ribble	153	153	193	222	12.4
West Lancashire	118	109	87	101	5.6
Hyndburn/ Ribble Valley	151	175	205	232	13.0
Burnley	219	241	262	262	14.6
Pendle	176	184	194	211	11.8
Rosendale	88	88	88	100	5.6
District	1266	1368	1500	1654	92.4
Central teams*	325	258	191	137	7.6
Lancashire CLA	1591	1626	1691	1791	100
Validated**	1585	1590	1665		



Commencement of LCS

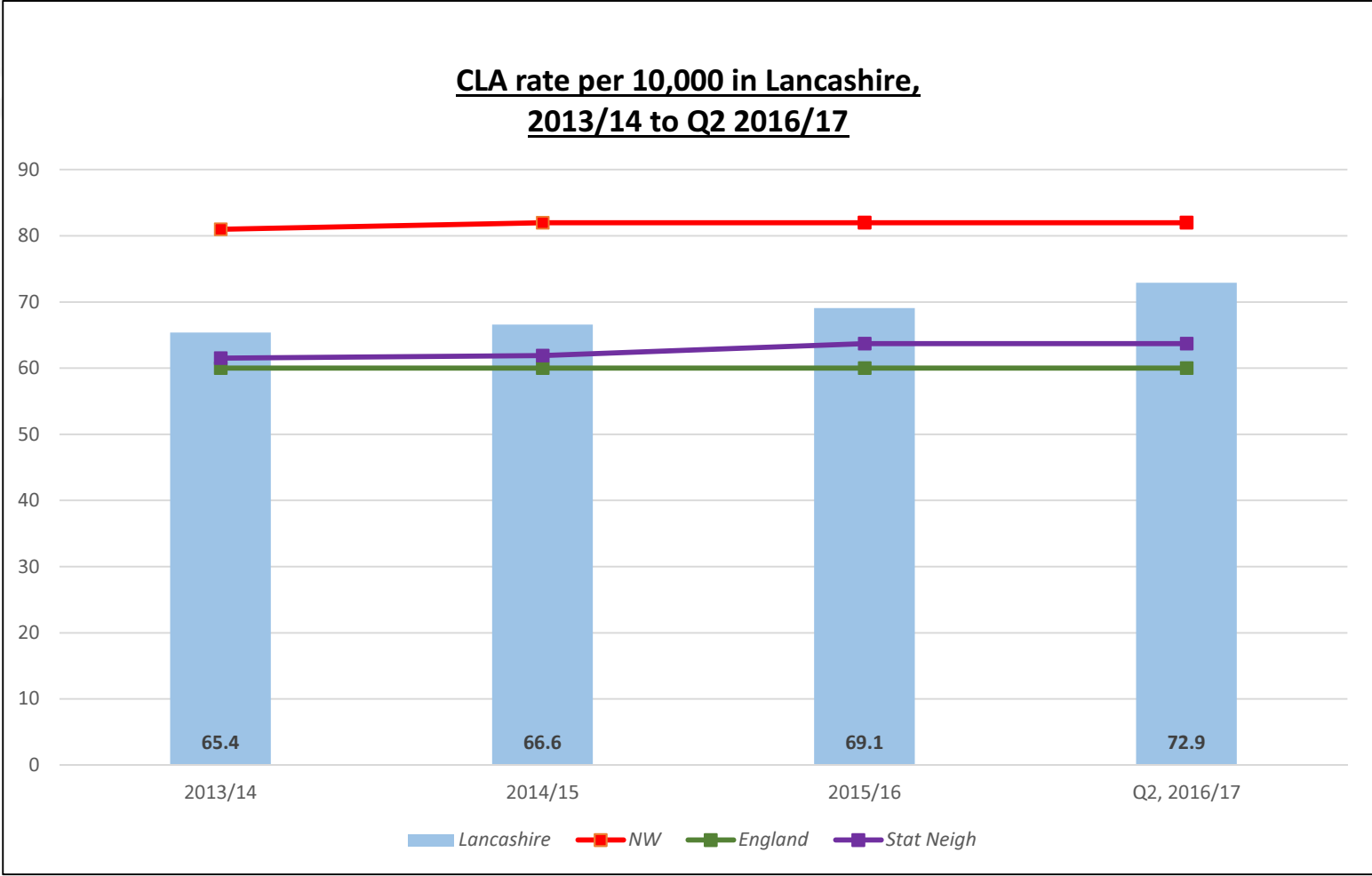
**Where cases on LCS are not assigned to a district CSC team
**Slight differences in between in-house and validated numbers
due to timing of when data reports were run*

Life in Care – Facts Cont'd...

RATE PER 10,000 (0 – 17) OF CHILDREN LOOKED AFTER				
District	Mar-14	Mar-15	Mar-16	Oct-16
Lancaster	41.8	49.3	54.6	59.1
Fylde/Wyre	21.8	31.1	30.0	35.9
Preston	59.2	60.2	73.0	79.7
Chorley/South Ribble	34.0	33.8	42.5	48.7
W Lancs	52.3	48.8	38.9	45.4
Hyndburn/Ribble Valley	49.3	57.4	67.4	76.6
Burnley	112.3	123.9	133.7	132.9
Pendle	85.6	88.4	93.3	101.2
Rossendale	58.3	58.2	57.9	65.4
Lancashire CLA	65.4	66.6	69.1	72.9
Validated*	65	65	68	

→
Commencement of LCS

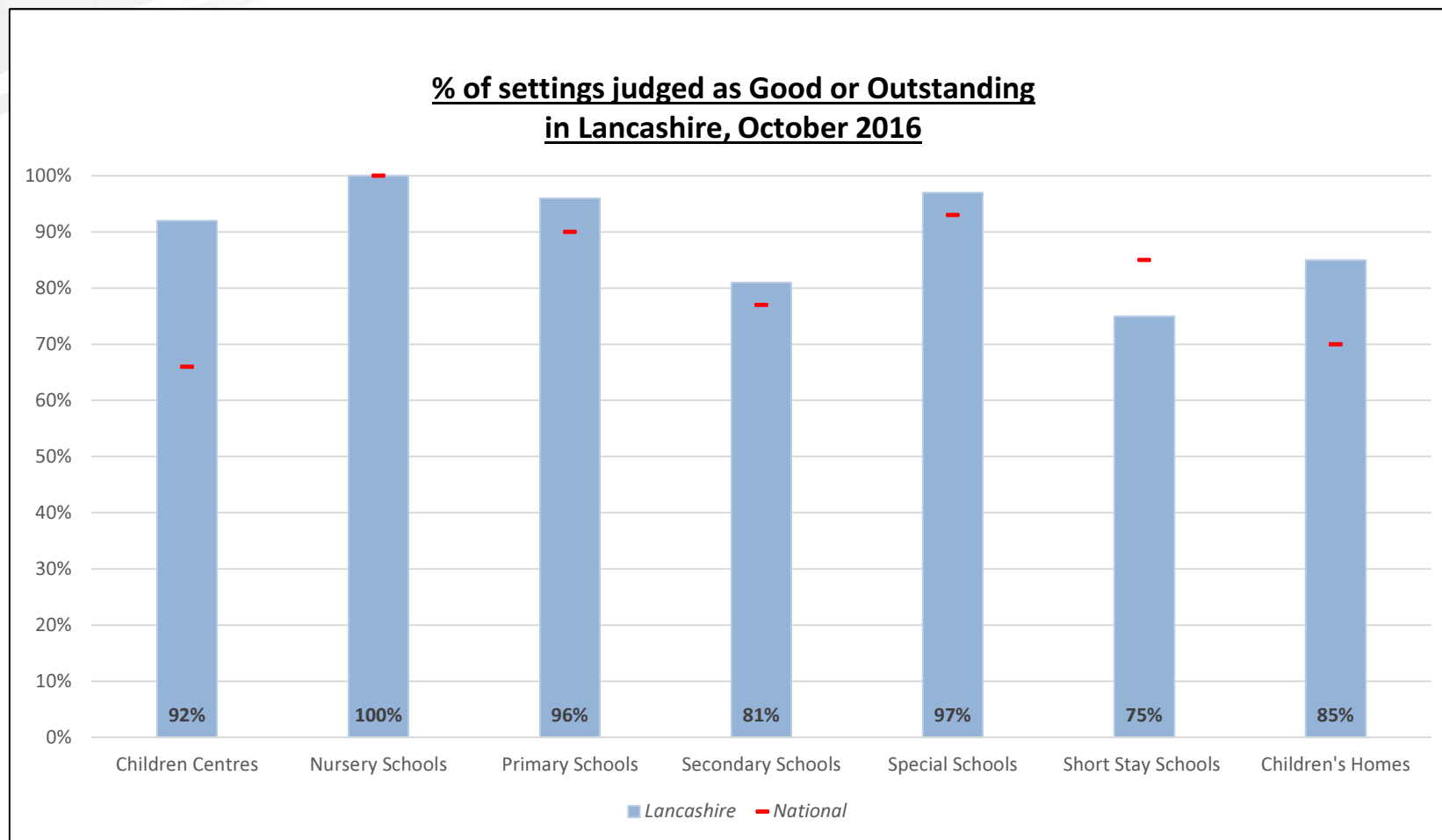
**Slight differences in between in-house and validated rates of CLA due to timing of when data reports were run*



Inspection Facts

	Total Inspected (Oct 16)	Number Judged Good or Outstanding	Number judged as Inadequate
Children Centres	61	56 (92%)	0
Nursery Schools	24	24 (100%)	0
Primary Schools	480	460 (96%)	1
Secondary Schools	81	66 (81%)	2
Special Schools	30	29 (97%)	0
Short Stay Schools	8	6 (75%)	1
Children's Homes	13	11 (85%)	0

Inspection Facts



Performance Data - Strengths

Measure	Most Recent Performance	Rank (out of 152 LAs)	Quartile	Eng Ave
CLA Adopted in the Year	20% (2016)	33	2	15%
Long Term Placement Stability of CLA	74% (2015)*	21	1	68%
CLA Placed more than 20 miles away from Home	9% (2016)	22	1	14%
CLA – Level 4+ Grammar, Punctuation & Spelling at KS2	63% (2015)**	24	2	54%
CLA – Persistent Absentees	4.6% (2015)**	45	2	4.9%
CLA – Fixed Term Exclusions	8.3% (2014)**	30	1	10.3%
Emotional Health of CLA (Strengths and Difficulties Questionnaire)	13.5 (2015/16)	29	1	13.9
CLA Offending	4.0% (2015)*	9	1	5.0%
CLA – Level 4+ Maths at KS2	65% (2015)**	40	3	64%

**To be confirmed when validated figures for 2015/16 will be available*

***Validated figures for 2015/16 will be available in March 2017*

Possible Key Lines of Enquiry for Inspectors based on Performance Data

Measure	Current Perf	Prev Perf	Rank (out of 152 LAs)	Quartile	Eng Ave
CLA Rate Per 10,000	68.0 (2016)	65.0 (2015)	-	-	60.0
% of Care Leavers in Suitable Accommodation	78.8% (2016)	68.0% (2015)*	121	4	83.0%
% of Care Leavers in Employment, Education or Training	41.0% (2016)	37% (2015)*	131	4	49.0%
% of CLA achieving 5 GCSEs A* - C	18.4% (2015)**	17.9% (2014)*	45***	3	18.3%
% of CLA achieving 5 GCSEs A* - C including English & Mathematics	14.0% (2015)**	7.7% (2014)*	33****	4	13.8%

**Not comparable to previous year due to DfE definition change for the indicator*

***Validated figures for 2015/16 will be available in March 2017*

****Not out of 152 LAs – only 68 LAs provided data*

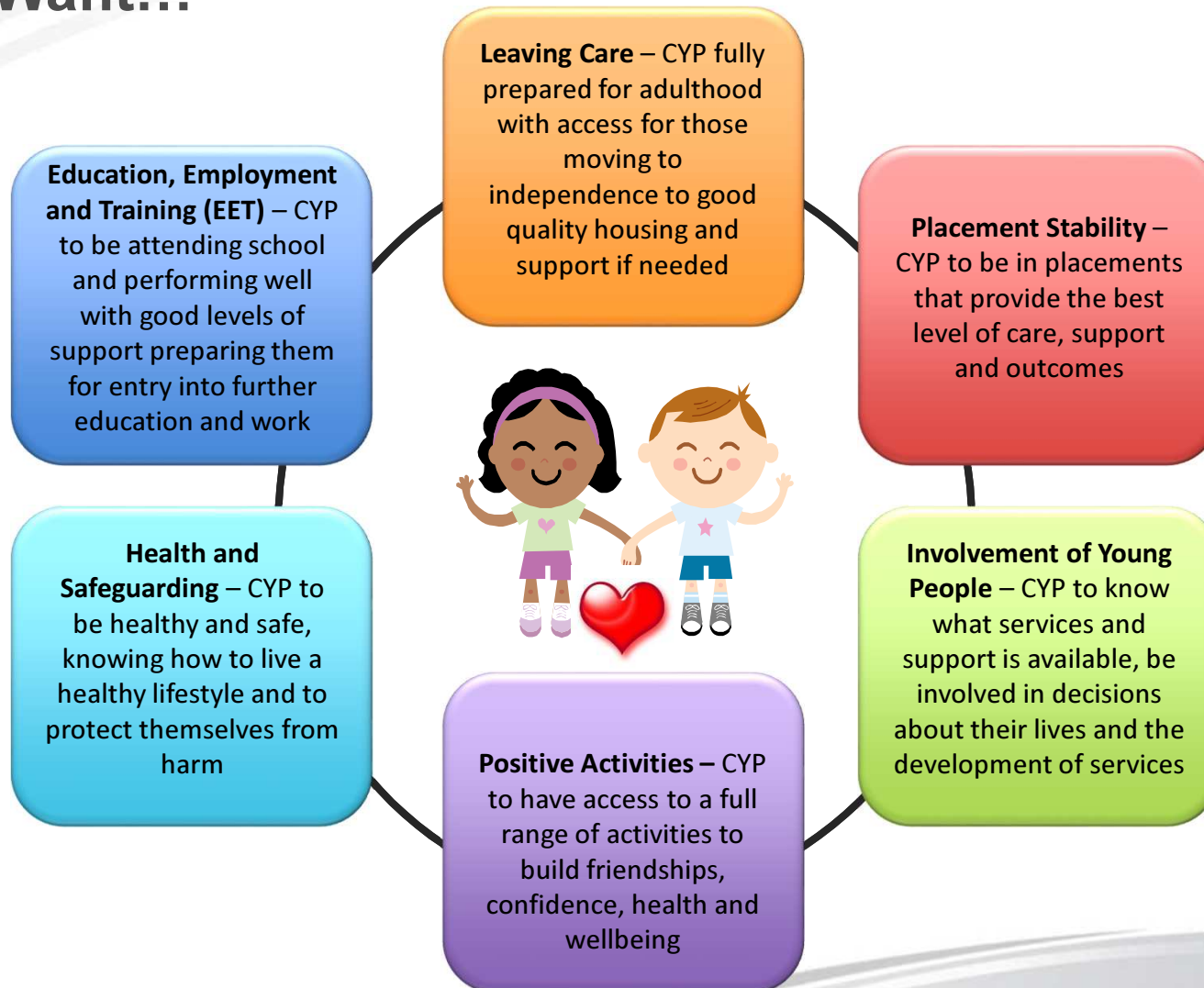
*****Not out of 152 LAs – only 43 LAs provided data*

Continuous Improvement

The Board will look to:

- Strengthen role of LINX (CiCC) and LINX Junior (primary aged children) and increase its membership.
- Maintain monitoring of all services available to CLA.
- Strengthen involvement of Elected Members including Reg 22 visits to Out of Borough children.
- Developing new ways of communicating with CLA.
- Identifying and linking in with partners on key issues e.g. LSCB – Challenge Panels?
- Promote and raise awareness of the Board.

Priorities - Corporate Parenting Board – We Want...



Questions?

CPB to LSCB

- How can we continue to support the LSCB?

LSCB to CPB – any questions?

For further information on the Corporate Parenting Board,
please visit the [website](#).